

THE COLUMBUS FOLK MUSIC SOCIETY PRESENTS THE 28<sup>TH</sup> ANNUAL



ROOTS, ACOUSTIC MUSIC AT ITS BEST!

MAY 2025

3<sup>th</sup> & 4<sup>th</sup>

HIGHBANKS  
METRO PARK

LEWIS CENTER, OH  
NORTH OF COLUMBUS

3 Performing Stages • 30+ Music Workshops • Ongoing Jam Tents  
Young Adult Offerings • Kids' Programming • Crafts & More!

SATURDAY NIGHT HEADLINER:

**RICHARD SHINDELL**

ORIGINALLY FROM NY, NOW TOURING FROM HIS HOME BASE IN BUENO AIRES, ARGENTINA, ACCLAIMED FOLK ARTIST RICHARD SHINDELL IS A WRITER WHOSE SONGS PAINT PICTURES, INHABIT CHARACTERS, AND EVOKE ENTIRE WORLDS!

**NO FIXED FEES - YOUR GENEROUS SUPPORT MAKES THIS ALL POSSIBLE!**

Donations on site or Eventbrite.com / Central Ohio Folk Festival

**WWW.COLUMBUSFOLKMUSICSOCIETY.ORG**



## SATURDAY EVENING HEADLINER

Acclaimed Singer-Songwriter

# RICHARD SHINDELL

Originally from Long Island, New York, now residing in Buenos Aires, Argentina, Shindell is a writer whose songs paint pictures, tell stories, juxtapose ideas and images, inhabit characters, vividly evoking entire worlds along the way and expanding our sense of just what it is a song may be.

Richard Shindell lives as both an immigrant and emigrant, crossing thresholds, which informs his illumination of the human experience through narrative song.

From lighthearted ballads and adulterous love songs, to dirges and diatribes that skillfully skewer politics, prejudice, war and religion, to the comic point-of-view of a cow stuck in a barbed wire fence, he has a unique ability to morph into the soul of the many and varied personalities he casts as narrators in certain songs—veritable novellas framed in haunting acoustic melodies.

Over the years, he has worked with the likes of Joan Baez, Lucy Kaplansky, and Dar Williams. *The Wall Street Journal* has called him “a master of the subtle narrative.” [richardshindell.substack.com](http://richardshindell.substack.com)



Innovative, original and occasionally spiritual, Shindell's songs weave tales that interchangeably champion the downtrodden, exalt the disaffected or wax empathetic to those lost to society's fringes.

**LISTEN:** [The Next Best Western](#)

**NO FIXED FEES – YOUR GENEROUS \$\$ SUPPORT MAKES ALL OF THIS POSSIBLE!**  
**FESTIVAL DONATIONS ON SITE OR:** [centralohiofolkfestival2025donate.eventbrite.com](http://centralohiofolkfestival2025donate.eventbrite.com)

**HOURS:** 10:30am-9:30pm Saturday / 10:30am-5:30pm Sunday

**Festival Store:** 10:30am-6pm Sat. / 10:30am-4:30pm Sun. / **Food Trucks on site**  
**Concerts / Workshops / Jams:** 11am-6:30pm Saturday / 11am-5:30pm Sunday  
**Beer Garden Concessions (2 tents):** 11am-6:30pm & Noon-7:30pm Saturday /  
Noon-3:30pm & 1-4pm Sunday **Saturday Night Headliner:** 7pm  
**YouthFolk Tent (includes Box Frame Drum Making):** 11am-4pm Sat. / 1-4pm Sun.  
**Kids' Activities & Programming:** 11am-4pm / 5pm Saturday / 1-4pm Sunday  
**Heart Beat™ Drum Circle with Baba Harris:** 5-6pm Saturday / 4-5pm Sunday

# WELCOME FEST GOERS / IMPORTANT STUFF!

Are you itching to catch some live roots music in a great outdoor setting? Are you looking for an inexpensive, rich experience for your family? Are you a musician looking to hone your craft or jam with other musicians? Do you just love to sing? You'll find it ALL here! There is kids'/ youth programming, 30+ music workshops (all levels), festival store, staffed Instrument Storage Tent, opening & closing community sings, beer gardens, and a drum circle each day. There are five ongoing, open jam tents – bluegrass, old-time, folk/folk-mix, pure song, and one serving the beginner. Nocterra Brewing craft beer is our official event beer. **Please note**, you are **not permitted to bring your own alcohol** onto Metro Park grounds. Also, we no longer sell bottled water. We have reasonably priced "festival" Tritan plastic water bottles (or bring your own) for refilling at our water stations.

**Donation tents are set up at the entrance. Know that your generous \$\$ support makes all of this possible!** With a donation of \$20 or more, you'll receive a fun "flexible flyer" and a few other cool items. **Pre-event donation is recommended over on-site if you hope to reserve inside tent seating for the Sat. night concert; otherwise seating is on the lawn.** A pre-event donation link is at bottom of this page. The tent seats 170; or just bring lawn chairs!

A big shout out to: The Columbus Foundation, Ohio Arts Council, our sponsors, Metro Parks, and to CFMS members & friends who **donate heaps** of time/talent to make this possible!



## KIRBY MAIN STAGE PERFORMERS – SATURDAY

(In order of appearance beginning at 11am)



### FOLK HEROES OPENING SING-ALONG WITH PHIL HART & JEFF PUTNAM (Columbus, OH)

Phil Hart and Jeff Putnam have been playing music and leading sing-alongs together since they met at a local summer camp in 1969. Kick off the festival by joining them to sing songs by legends such as Woody Guthrie, Bob Dylan, James Taylor, John Prine, Ian Tyson, Bob Marley and many others. [www.pahart.com](http://www.pahart.com)

### SCOTT COOK & PAMELA MAE (Edmonton, Alberta, CAN)

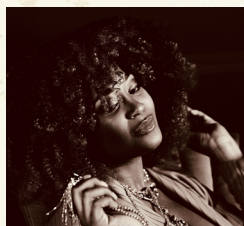
#### FOLK SINGER-SONGWRITER

Cook has been called "one of Canada's most inspiring and imaginative storytellers" (*UK Magazine*, Maverick County). "Cook has travelled far and wide to find the heart of an increasingly agitating world, and his genuine hope for it is palpable." - Michael Dunn. His recently released 8th album, *Troubadourly Yours*, features sturdy, straight-talking songs that are pure, accessible folk. [www.scottcook.net](http://www.scottcook.net)



DONATE AT: [centralohiofolkfestival2025donate.eventbrite.com](https://centralohiofolkfestival2025donate.eventbrite.com)





## ROBERTA LEA (Norfolk, VA)

### PROGRESSIVE COUNTRY SINGER-SONGWRITER

*American Songwriter Magazine* describes Lea as “a compelling artist” while *The Nashville Scene* praises her ability to “score hits with her catchy, textured and beautifully sung originals.” The award-winning singer-songwriter released her debut album “Too Much of a

Woman” to critical acclaim and punctuated her presence in the industry with a coast to coast tour. Described as “country-neo-pop” with a “delicious, folky flair,” the Virginia native is known as a powerful songwriter and engaging storyteller.

[www.iamrobertalea.com](http://www.iamrobertalea.com)

## KANAWHA TRADITION WITH JOHNNY STAATS (Dunbar, WV) OLD-TIME

Kanawha Tradition is a masterly old-time band from the Charleston area. Consisting of acclaimed, award-winning artists, the band is composed of Kim Johnson on banjo, Johnny Staats on mandolin, and Bobby Taylor on fiddle. They have provided music at countless square dances and festivals. Individual members have also been featured at The Kennedy Center and on *NBC's Today Show*. This is authentic, genuine old-time music from the hills of West Virginia! [btfiddler@suddenlink.net](mailto:btfiddler@suddenlink.net)



## THE CROSS-EYED POSSUM (Prescott, AZ) FOLK/AMERICANA

The Cross-Eyed Possum is a Folk-Americana band led by identical twins. They play with the energy of a folk-rock band through the lens of intimacy created as an acoustic-adjacent duo. Their music is an amalgamation of their collective love for rock 'n' roll, their experience with the free and honest feeling found in acoustic/bluegrass festivals, and their time

spent dedicated to the adventurous tendencies of jazz and classical music composition while attending universities. [crosseyedpossumband.com](http://crosseyedpossumband.com)

## STILLHOUSE JUNKIES (Durango, CO) PROGRESSIVE STRINGBAND

Acoustic adventurers Stillhouse Junkies explore the worlds between roots, bluegrass, Texas swing, blues, and rock. Their free-flowing musical interplay and improvisation make every show unique as they weave their way through high-energy, intricately composed original songs, never taking the same path twice. Formed in 2017, the band consists of Fred Kosak (guitar, mandolin), Alissa Wolf (fiddle), Eric Lee (mandolin, fiddle, guitar), and Matt Thomas (bass). [www.stillhousejunkies.com](http://www.stillhousejunkies.com)



**MORE INFO:** [www.ColumbusFolkMusicSociety.org/festival](http://www.ColumbusFolkMusicSociety.org/festival)

# KIRBY MAIN STAGE PERFORMERS – SUNDAY

In order of appearance beginning at 11am



## **CLACI (PRONOUNCED 'SELASSIE I')** (Columbus, OH) **SUNDAY** **OPENING "SONGS FOR THE SPIRIT" / REGGAE STYLE**

Mark Hunter is the lead singer of the acclaimed Columbus-based Ark Band. Born in Freetown, Sierra Leone, Mark moved to boarding school in Ghana at age 11, where he was a 'foreign' student blessed to absorb some of the language and culture of Ghana. From there, he came straight to college at Otterbein in Westerville and Mark has lived and performed in Ohio ever since. For this solo show he'll play acoustic roots storytelling music that draws from Reggae, Country and African influences. [m.claci.112@gmail.com](mailto:m.claci.112@gmail.com)

## **BUTCH ROSS** (Chattanooga, TN) **APPALACHIAN DULCIMER**

Butch Ross has been gleefully smashing disparate genres of music together for nearly 20 years. Using the mountain dulcimer as a prism, he has used the instrument to conquer everything from Bach to the Beatles to Radiohead (and everything in between). The dulcimer is an unassuming thing, with a handful of strings and a history that feels embedded in the lineage of countless Appalachian musicians. But Ross has taken it and made it something more, something remarkable and versatile. [www.butchross.com](http://www.butchross.com)



## **SCOTT LEE & THE WANDERERS** (Columbus, OH) **COUNTRY-AMERICANA / RAP FUSION (PRESENTED BY** **MUSIC COLUMBUS)**

Scott Lee & the Wanderers is a hard driving, honky-tonk band that plays original tunes Scott has crafted to sound like the country hits of old. Included are classic country standards from the likes of Hank Williams and Ernest Tubb. The band is fronted by Scott Lee, a Columbus-based singer-songwriter who has spent 20 years exploring Americana, Blues, Folk, Bluegrass and Country. He has produced 3 full length albums and performed throughout the U.S. Part of the set interlaces the music of Lo V, self-described as: "rapper/singer/producer/economist/once described as the coldest in the game but really nice, forreal." The entire presentation is brought to you by Music Columbus as part of their "Music Columbus' 2024 Incubator Musicians" project. [www.musiccolumbus.com](http://www.musiccolumbus.com)

## **SATURDAY SHOWCASE STAGE PERFORMERS** in order of appearance beginning at Noon:

Moe Reen (Country Singer-songwriter), Cross-Eyed Possum (Folk/Americana), Moe Reen (Country Singer-songwriter), Dante Mazzetti (Indie-folk), Fox & Clover (Singer-songwriter), Roberta Lea (Progressive Country)

**DONATE AT:** [centralohiofolkfestival2025donate.eventbrite.com](https://centralohiofolkfestival2025donate.eventbrite.com)



## DANTE MAZZETTI (NYC, NY)

### INDIE-FOLK/SINGER-SONGWRITER

Mazzetti's raw, gravelly vocals paired with his daring creativity have positioned him as a force in the music world. Not only a talented vocalist, Mazzetti is also an adept multi-instrumentalist. Named "one of the best artists of the year" by *Rival* magazine and "one of the Top 20 Prospects" by *Music Connection* magazine, Mazzetti has been gaining significant attention for his unique brand of gritty indie folk including his song "Here I Go" being prominently featured in the hit Netflix film "Pain Hustlers." [www.dantemazzetti.com](http://www.dantemazzetti.com)



### FESTIVAL ARTISTS' IMPROV JAM BAND

House band – session band – jam band, we're not quite sure what to call our roll-out of the festival's newest addition! Facilitated by Columbus' session musician Brian Szuch this highly talented mix of musicians performing at the 2025 Central Ohio Folk Festival are thrown together on the stage, without practice, a set list, or ever having played together. It showcases the talent of musicians who can improvise on the fly and create some marvelous music in the process – simply knowing only style and key.

[szuch@breezelineohio.net](mailto:szuch@breezelineohio.net)

---

### SUNDAY SHOWCASE STAGE PERFORMERS

 in order of appearance beginning at Noon:

Stillhouse Junkies (Progressive String Band), Denison Univ. American Roots Ensemble (Blues/Bluegrass), Upstream Drifters (Folk/Old-time), Fox & Clover (Singer-songwriter)

### SATURDAY BAILEY ACOUSTIC STAGE PERFORMERS

 in order of appearance

beginning at Noon: Henry Harnetty (Singer-songwriter), Roscommon Sessions (trad-Irish), Cigar Box Scott (Foot-stomping folk), 2025 Kirby Scholarship Awards & Most Outrageous Song in the World Contest, Kanel & Tatum (Irish pub music), All Those Who Wander (Celtic)

### SUNDAY BAILEY ACOUSTIC STAGE PERFORMERS

 in order of appearance beginning

at Noon: Scott Cook & Pamela Mae (Singer-songwriter), Doyle & Friends Jam Band (Folk), Lilya Zhang / William Meisterheim (2024 Kirby Scholarship winners), Rainmaker Blues Duo (Blues)

**5 ONGOING OPEN JAM TENTS** Bluegrass • Old-time • Folk/Folk Mix • Beginner • Folk-Song  
"Heart Beat" Drum Circles: 5-6pm Sat. & 4-5pm Sun. / Closing Song Circle: 4:30-5:30pm

---

### FESTIVAL WORKSHOPS

 If you are new to music, curious about music in general or trying out an instrument for the first time, there are workshops for all of that. Complete listing of workshops is on our website under [festival/workshops](http://festival/workshops). There is no fee for workshops.

## PRESENTER

## WORKSHOP TITLE AND LEVEL

**SHINDELL, RICHARD**  
(FESTIVAL HEADLINER)

Narrative Voice in Songwriting ALL  
Choosing Cover Songs ALL

**CIGAR BOX SCOTT**

Reinventing Traditional Songs ALL

**COOK, SCOTT**

Song Structure: Key to Creativity ALL

**CROSS-EYED POSSUM**

Jazz & Folk Fusion ALL  
Grooving on Acoustic String Instruments ALL

**DAVIS, BRENT WITH RICH BAKER**

Bluegrass History in Columbus, OH ALL

**GASTEL, DAVE WITH JOHN HILL**  
(RAINMAKER BLUES DUO)

Blues Harmonica ALL

**GRIFFIN, HAYES**

Mandolin Foundations ALL

**HICKS, BETH**

Introduction to Irish Whistle BEG (2) workshops  
(loaners available)

**HILL, JOHN**  
(FROM RAINMAKER BLUES DUO)

Blues Guitar Fundamentals BEG-INT

**KANEL, JEFF** (FROM KANEL & TATUM)

Irish Fiddle Technique ADV BEG and UP

**LEA, ROBERTA**

Breaking Barriers in Country Music ALL

**LINDROTH, JIM**  
(FROM ALL THOSE WHO WANDER)

Intro to the Bodhran BEG

**MILLER, AUBREY & CRAIG MAST**  
(FROM UPSTREAM DRIFTERS)

Introduction to Clawhammer Banjo BEG

**OPACHICK, MATT**

Using Violin Technique to Improve Fiddling ALL

**RACE, PAUL D.**

Introduction to Autoharp BEG (loaners available)  
Introduction to 5-String Banjo BEG

**ROSS, BUTCH**

Reverse-Slant Chords for Dulcimer INT  
Neil Young Songs on Dulcimer INT

**SAMS, TODD**

Banjo: Scruggs to Melodic INT-ADV  
Instrument Maintenance and Adjustments ALL

**SCHLENKER, ADAM**  
(FROM DENISON UNIV. AMERICAN ROOTS ENSEMBLE)

Bluegrass Guitar ALL

**STILLHOUSE JUNKIES**

Arranging for an Ensemble ALL

**TAYLOR, BOBBY & JOHNNY STAATS**  
(FROM KANAWHA TRADITION)

Old-time Fiddle and Mandolin Duets INT

**TAYLOR, BOBBY** (FROM KANAWHA TRADITION)

Old-time Fiddle ALL

**VAN KLEEF, DEBORAH**

Getting Started on the Uke BEG (2 workshops)  
(loaners available)

**WELLING, GEORGE and FRED STAUNTON**

How to Play in a Bluegrass Jam ADV BEG & UP

**DONATE AT:** [centralohiofolkfestival2025donate.eventbrite.com](https://centralohiofolkfestival2025donate.eventbrite.com)

**PERFORMANCE TIME SLOTS CAN BE SUBJECT TO CHANGE:** Check our [website festival page](#) for up to date information or the schedules posted outside each tent.

## STUFF TO KNOW

**DIRECTIONS** Highbanks Metro Park, 9466 Columbus Pike (Rt. 23), Lewis Center, OH 43035. Enter at Highbanks entrance off of Rt. 23. Follow signs to the Big Meadows area. The Metro Park is easily accessible from I-270, St. Rt. 315 or Rt. 23.

**PARKING** The parking lot next to the festival grounds is reserved for presenters, stage performers, and vendors. Park patron and event attendees parking is provided at any other picnic area parking lot or in the large center field adjacent to the Big Meadows area where the festival occurs. From any Big Meadows parking lot or center field, it is no more than a ten-minute walk along a designated pathway.

**SAT. NIGHT PARKING** If you plan on attending the Saturday night concert, we encourage you to move your vehicle around 6:15pm to the lot(s) closest to festival grounds, all of which will be opened up at that time. If parking in designated spots becomes full, overflow parking will still be available in the large center field. There is no fixed lighting in the center field, however some lighting provided along the path will be your quickest access to & from the concert venue. Please follow the guidance of park personnel if you are arriving just for the Saturday night concert.

**DROP-OFF** There will be a roving golf cart to and from the center field parking lot to assist those having difficulty walking or those needing assistance carrying musical instruments.

**FESTIVAL ENTRY** We will have donation tents positioned at the entrance. **Your generous \$\$ support will make all of this possible.**

Donations can be on site or pre-event at Eventbrite (see link at bottom of pages 3, 5, & 7). Donations of \$20 or more get you some free fun stuff. **Children ages 12 & under must be accompanied** by an adult at all times. NOTE: Leashed dogs are permitted in the Metro Parks.

**FOOD** Food Trucks on site. You're welcome to bring your own food. There are some picnic tables available and lots of room to spread a blanket on the ground or set up lawn chairs. While food trucks may sell bottled water, in an effort to be eco-friendly, the festival does not.

We do sell reusable water bottles or bring your own! We provide water-refill stations.

**BEER GARDEN** We have two Beer Garden/Concession Tent locations. If you wish to partake, you must be 21, will be carded at the entrance, and receive a specific wristband. Concession hours: 11am - 6:30pm/Noon-7:30pm Saturday and Noon - 3:30pm/1-4pm Sunday. **All alcohol must be consumed in the Beer Garden areas.** You are encouraged to bring lawn chairs! **You are not permitted to bring your own alcohol onto Metro Park grounds.**

**FESTIVAL STORE** We provide a store with festival merchandise. There are also other fun and interesting vendors. **NEW for 2025: all performers' merchandise will be sold outside their performing tent** immediately following their performance. It will no longer be sold at the Festival Store. Look for the "Performer Merchandise" tents positioned by the Kirby, Showcase and Bailey Acoustic stage tents.

**INSTRUMENT STORAGE TENT** There is a fully staffed instrument storage tent located next to the Kirby Main Stage Tent. Storage tent hours: Saturday: 10:30am - 4pm and Sunday: 10:30am - 4:30pm. **ALL instruments must be picked up by closing each day.**

**FIRST AID** For minor problems, first aid kits are available inside the Festival Store Tent (store sales area), at the Entrance Welcome Tent and inside the Kirby Main Stage Tent (Sound table). For more serious problems, park personnel are available to help as well as summon emergency services.

**MESSAGE BOARD & LOST&FOUND** The message board and Lost and Found box is located just inside the Festival Store Tent.

**FESTIVAL SCHEDULE** Schedules are posted on the grounds; look for the easels. They are also downloadable at: [www.columbusfolkmusicsociety.org/schedule-of-events.html](http://www.columbusfolkmusicsociety.org/schedule-of-events.html).

**LODGING** There are a number of hotels on Rt. 23 south of the Highbanks entrance and six minutes from the festival site. For camping options, Alum Creek State Park is a 13 minute drive away.